

HOLDER C 65 SC

Versatility, efficiency and manoeuvrability make the C 65 SC implement carrier an all-rounder in year-round use. Its driving and working comfort satisfy the highest professional standards.



Order no. **8.330-190.0**

Technical data

Drive		Diesel
Motor manufacturer		Kubota
Drive- performance	kW / hp	48 / 65
Cubic capacity	cm³	2615
Cylinder		4
Emissions standard		STAGE V
Fuel tank	l	65
max. Speed	km/h	40
Working speed	km/h	40
Permissible axle load, front	kg	2300
Permissible axle load, rear	kg	2300
Climbing ability	%	73
Noise level (in cab)	dB(A)	80
Load	kg	max. 1572
Wheelbase	mm	1820
Diesel particulate filter		1
Total permissible weight	kg	3500
Weight without accessories	kg	2400
Dimensions (L × W × H)	mm	4000 × 1500 × 2300



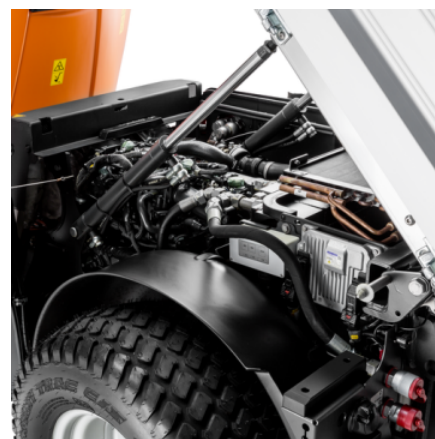
High variability for vehicle types, construction and expansion options

- Flexible use and large selection of powerful implements.
- Two standard attachment areas (front/rear) and a 3rd attachment area for articulated implements.
- Quick-change system enables 1 person to change implements without the need for any tools.



Ergonomic and comfortable cab

- Optimal room climate in all weathers with air-conditioning, heating, and rotating air nozzles.
- 360° panoramic view for unobstructed view of working area and safe manoeuvring.
- Doors on both sides for safe entry and exit to side facing away from the road.



Very easy servicing

- Hydraulically tiltable engine compartment cover allows tilting with articulated machine.
- Tanks can be swivelled out on both sides for easy cleaning and service access.